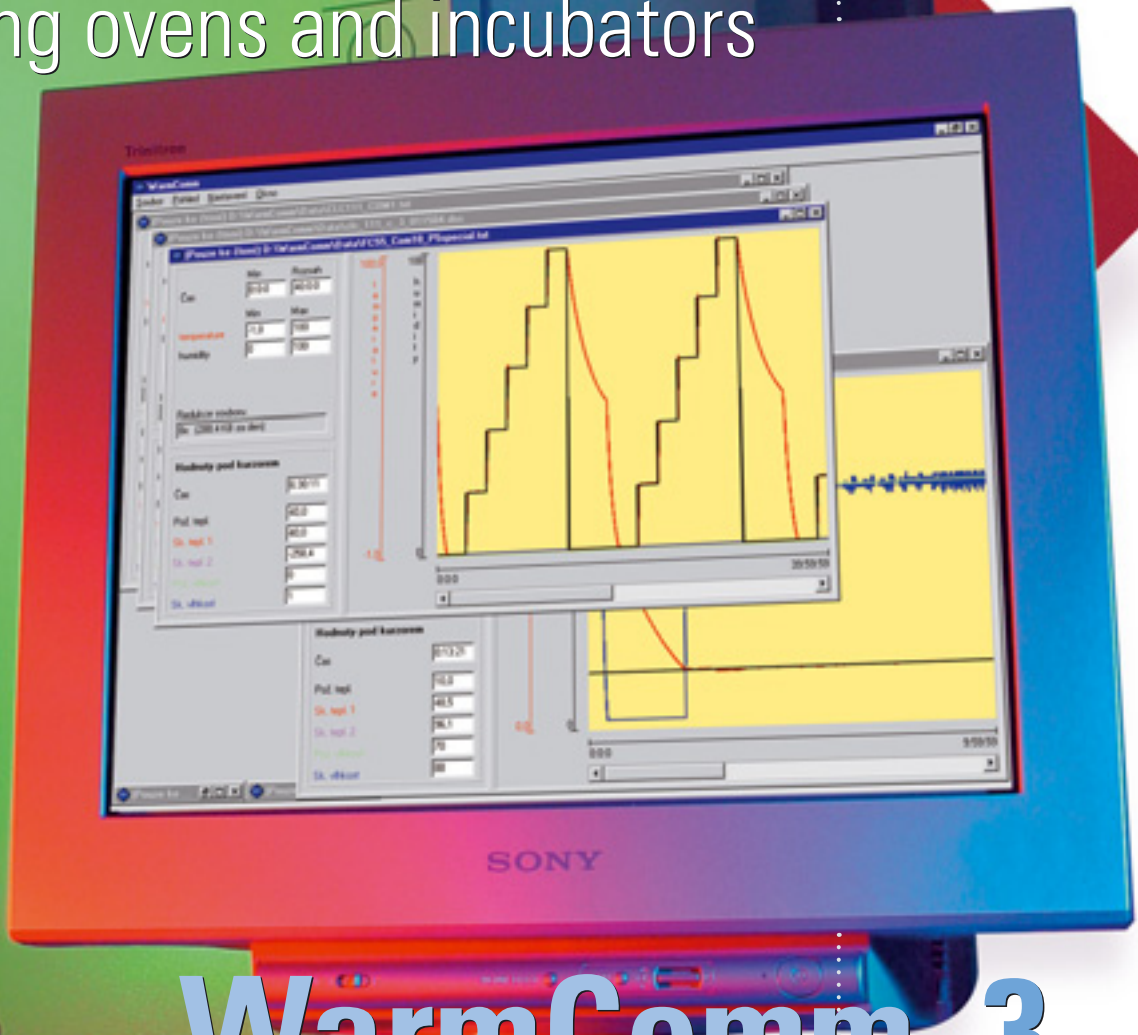




# Recording software

for laboratory drying ovens and incubators



# WarmComm 3

protecting human health



## Recording software

# WarmComm 3 for laboratory drying ovens and incubators – effective way to get your values

**WarmComm 3** – has been developed for universal use for evaluation of test and cultivation processes in BMT heat technology devices.

**WarmComm 3** – provides highly effective recording equipment for data storing in BMT chambers – Blue line. It is designed to record the course of temperature regulation with both the standard and the comfort line and of humidity regulation with the climatic chamber.

**WarmComm 3** – enables to follow up all output values measured in the BMT heat technology devices. Enables to watch the regulation on-line, to save the regulation course on a disc file, to review the already created files and to send e-mails informing regularly about the measurement in the devices and reports of not receiving data. With the comfort line also reports of error conditions are sent.

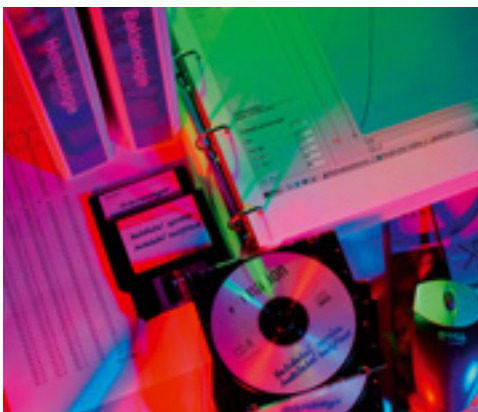
**WarmComm 3** – on the screen of your PC you can follow up the values of the followed-up variables on-line, evaluate their long-term development or simply read values of all measured variables at any moment during the already run process. The required and actual value of chamber temperature can be watched parallel, with the Comfort line also the required and measured pressure and, in case and independent PT 100 sensor is connected, also the temperature in your samples. It is also possible to monitor pressure in Vacucells, in incubators with exposure illumination value of UV or VIS, too.

**WarmComm 3** – can be easily connected to any BMT heat technology device\*, from the production line with a register C in S/N no additional adaptations are necessary (RS 232 interface is a standard equipment). The recording software is an optional equipment of BMT heat technology devices Blue Line.

**Version WarmComm 3 provides you with these options:**

- **WarmComm 3 B (Basic):** unidirectional communication with PC (record of the time process from the oven to PC)
- **WarmComm 3 P (Professional):** bidirectional communication with PC (management of the oven from PC and record of the time process from the oven to PC)
- **WarmComm 3 F:** bidirectional communication with PC (management of the oven from PC and record of the time process from the oven to PC- conformity with FDA directive 21 CFR Part 11)

\* incubators CO<sub>2</sub> (CO2CELL) use a special different software

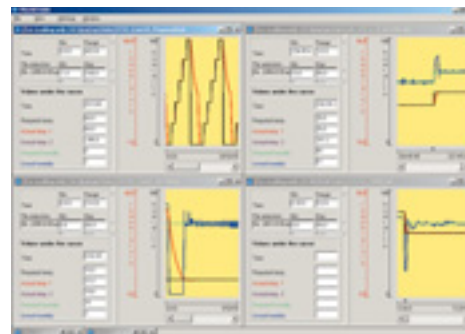


Data archiving

- connection to any common PC type (see hardware conditions, RS 232 interface)
- easy installation
- operating system Windows
- easy operation
- easy change of value-“span” – help to show even very fine changes of variables, to follow up long-term or short-term processes on one screen
- on-line following-up of temperature and humidity conditions in the chamber
- easy selection of data export to a printer or PC via service menu
- optional degree of data compressing
- numerical or graphical output
- number of connected devices depends on the number of free serial PC ports (max. 10)
- short-term and long-term continual following-up (depends on the size of your hard disc)
- easy made-to-measure adaptation of the system according to user's wishes

### Hardware conditions

- operating system Windows 2000 or XP
- CPU min. 400+ Mhz
- RAM min. 128 MB (for short-time measurement of one unit)
- maximal length of the connecting cable is 15 m (specified by RS 232 standard)
- one-hour-record requires about 200 KB-free space on the hard disc
- one free serial port for each unit to be watched



Printing a record in graphical or numerical form

Time	Temperature	Humidity
12:00:00	23.5	45
12:00:10	23.5	45
12:00:20	23.5	45
12:00:30	23.5	45
12:00:40	23.5	45
12:00:50	23.5	45
12:01:00	23.5	45
12:01:10	23.5	45
12:01:20	23.5	45
12:01:30	23.5	45
12:01:40	23.5	45
12:01:50	23.5	45
12:02:00	23.5	45
12:02:10	23.5	45
12:02:20	23.5	45
12:02:30	23.5	45
12:02:40	23.5	45
12:02:50	23.5	45
12:03:00	23.5	45
12:03:10	23.5	45
12:03:20	23.5	45
12:03:30	23.5	45
12:03:40	23.5	45
12:03:50	23.5	45
12:04:00	23.5	45
12:04:10	23.5	45
12:04:20	23.5	45
12:04:30	23.5	45
12:04:40	23.5	45
12:04:50	23.5	45
12:05:00	23.5	45

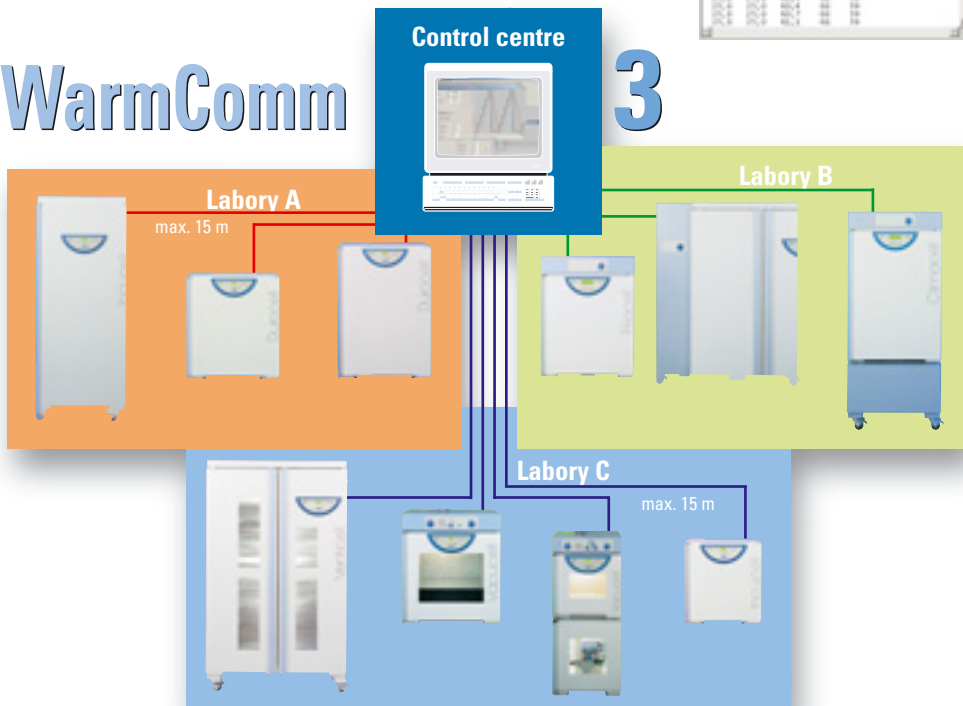
Export of data in various systems

# software

## WarmComm

### Control centre

# 3



BMT a.s., Cejl 50, CZ 656 60 BRNO  
Tel.: +420 545 537 111, fax: +420 545 211 750  
e-mail: mail@bmt.cz, http://www.bmt.cz



Distributor:  
MMM Medcenter  
Einrichtungen GmbH  
Semmelweisstrasse 6  
D-82152 Planegg/München  
Tel.: +49 89 89 92 26 20  
fax: +49 89 89 92 26 20  
e-mail: medcenter@mmmgroupp.com  
http://www.mmm-medcenter.com

